



# RESTORE



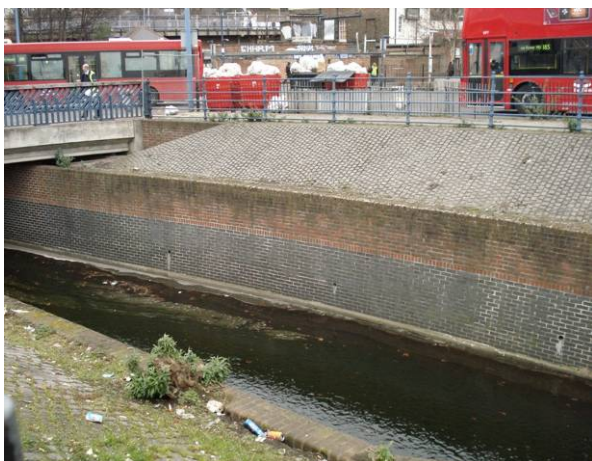
## Delivering river restoration through the UK planning system in South London



**Judith Cooke, Planning Liaison Officer, Environment Agency**  
**Matt Jericho, Planning Policy Officer, London Borough of Lewisham**



- Planning context
- London Borough of Lewisham
- Working together
- Good practice examples



# Planning context



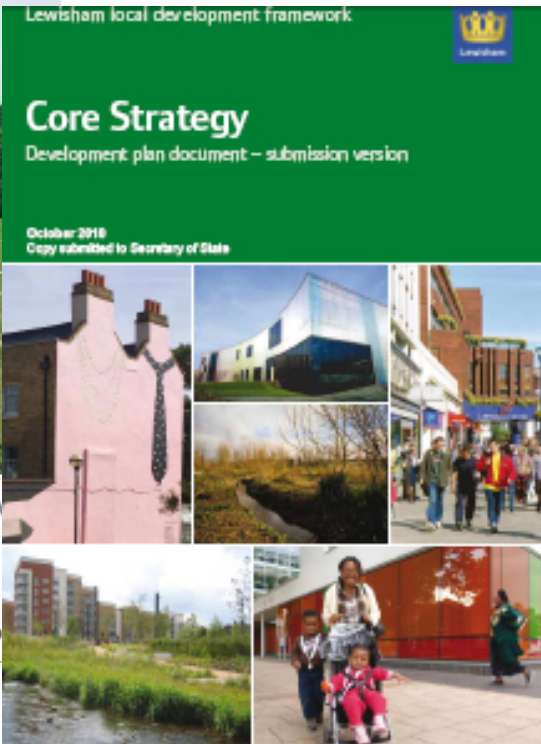
Office of the  
Deputy Prime Minister  
Creating sustainable communities

Planning shapes the places where people live and work and the country we live in. It plays a key role in supporting the Government's wider economic and environmental objectives and for sustainable communities.

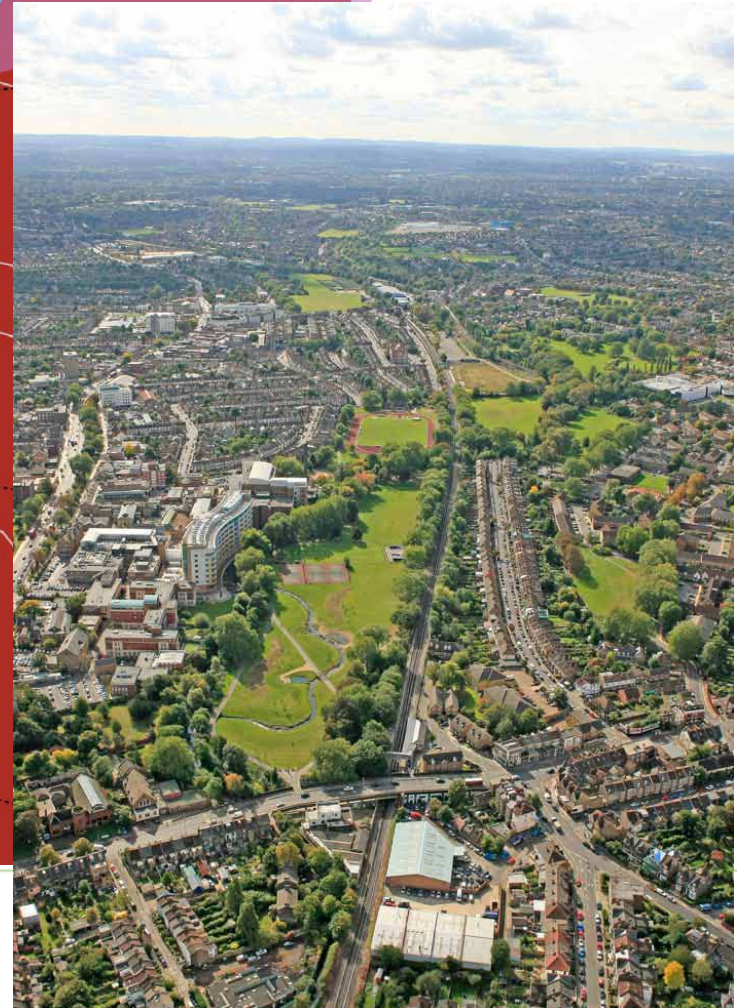
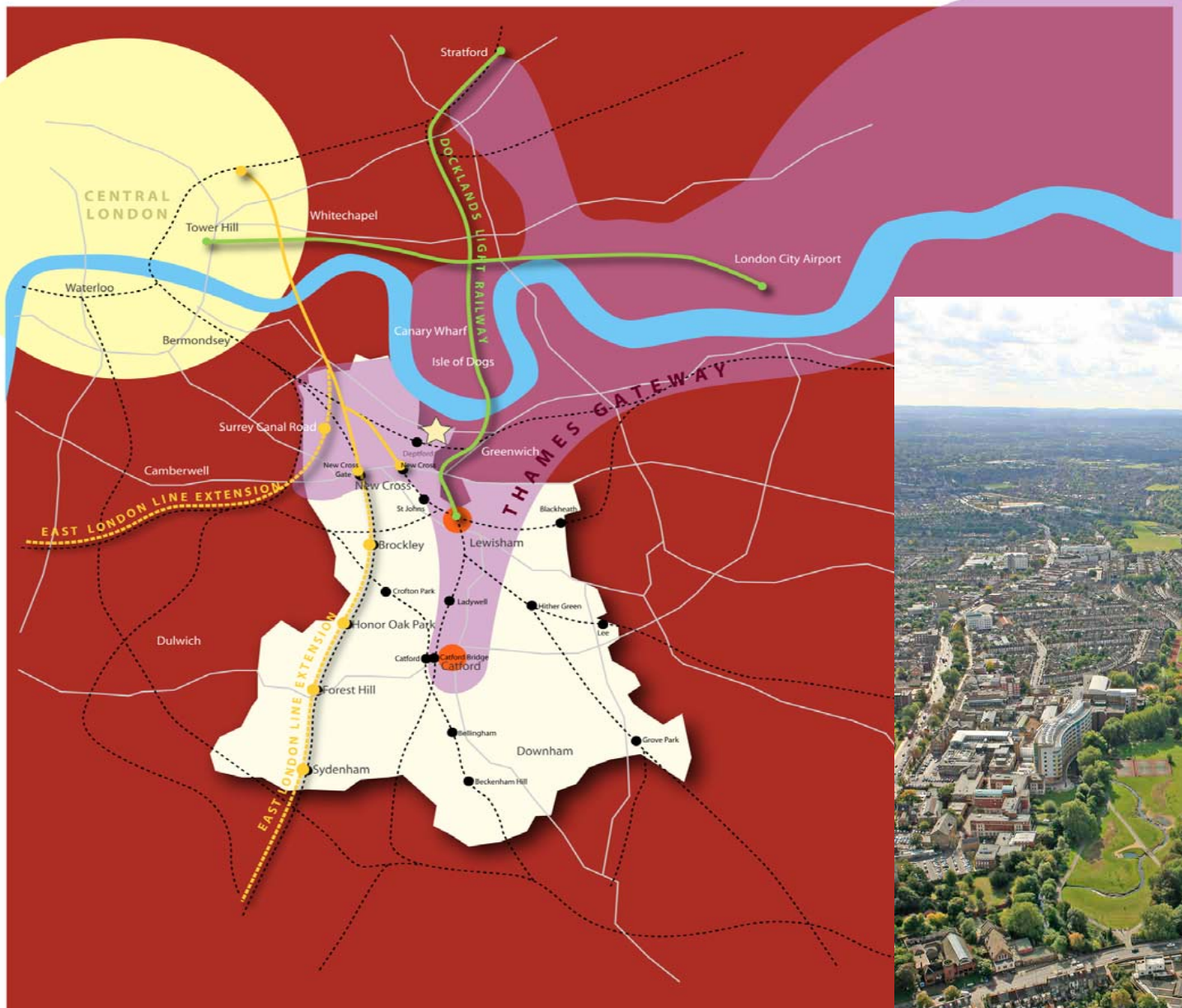


**THE LONDON PLAN**  
SPATIAL DEVELOPMENT STRATEGY FOR GREATER LONDON  
JULY 2011

MAYOR OF LONDON

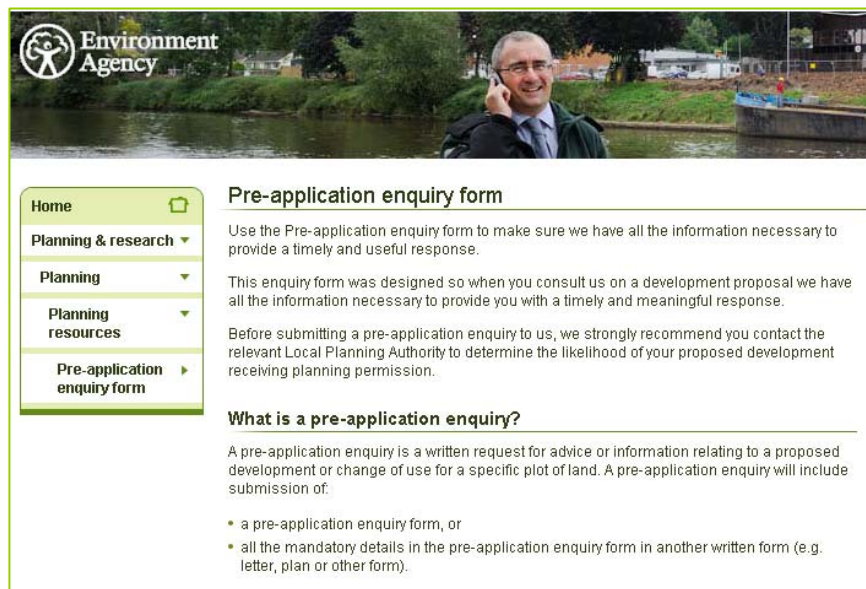






# Better ways of working

- ✓ monthly planning surgeries at Lewisham
- ✓ early joint pre application discussions on major sites
- ✓ validating applications with sufficient information
- ✓ workshops / seminars on key issues & opportunities
- ✓ creating and using positive local planning policies
- ✓ using flood risk standing advice
- ✓ joint improvement plan for Ravensbourne River
- ✓ regular joint management meetings
- ✓ joint training events and workshops



The screenshot shows the Environment Agency website. At the top, there is a banner image of a man in a suit talking on a mobile phone, with a river and trees in the background. Below the banner, the Environment Agency logo is visible. A navigation menu on the left includes links for Home, Planning & research, Planning, Planning resources, and Pre-application enquiry form. The main content area is titled 'Pre-application enquiry form' and contains the following text:

Use the Pre-application enquiry form to make sure we have all the information necessary to provide a timely and useful response.

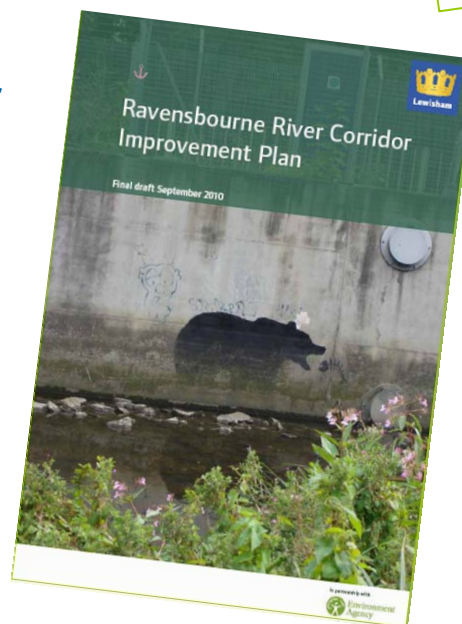
This enquiry form was designed so when you consult us on a development proposal we have all the information necessary to provide you with a timely and meaningful response.

Before submitting a pre-application enquiry to us, we strongly recommend you contact the relevant Local Planning Authority to determine the likelihood of your proposed development receiving planning permission.

**What is a pre-application enquiry?**

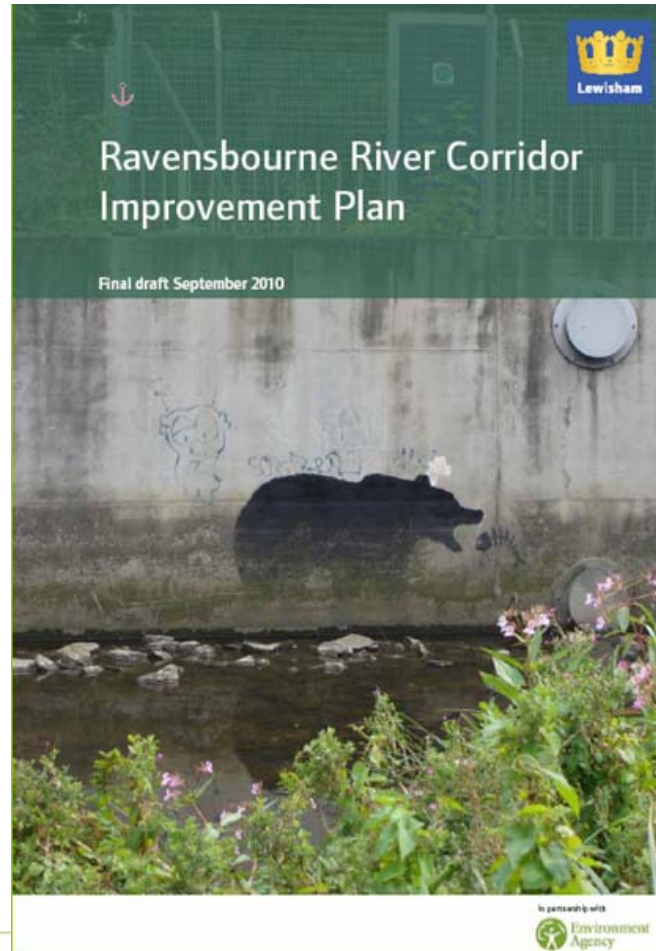
A pre-application enquiry is a written request for advice or information relating to a proposed development or change of use for a specific plot of land. A pre-application enquiry will include submission of:

- a pre-application enquiry form, or
- all the mandatory details in the pre-application enquiry form in another written form (e.g. letter, plan or other form).





# Ravensbourne River Corridor Improvement Plan





# Promoting good practice



# Questions ?





# Next steps, support and guidance



**Thames River Basin Management Plan** July 2011

## Lewisham's water environment

This factsheet summarises what you need to know about the water environment in your area and what you, as a local authority, can do to help improve it

### Lewisham's water environment

- The Ravensbourne River and its tributaries, the River Pool and River Quaggy, are the main rivers in Lewisham, which drain into the River Thames at Deptford. None of the 28 kilometres of water bodies in Lewisham currently meet the requirements of the Water Framework Directive, which aims to create higher quality water environments by 2027
- The key issues in Lewisham causing a poor water environment are water pollution, concrete river channels, invasive species and low flow in rivers. For each key issue we have created a checklist and resources to help you improve Lewisham's rivers for people, wildlife and visitors
- We can provide articles and guidance on improving Lewisham's water environment for your Lewisham Life e-newsletter, my place my planet newsletter and website
- There are many opportunities to build on existing good practice in Lewisham to improve the water environment. For example, through actions in the Ravensbourne River Corridor Improvement Plan project, the 3 Rivers Clean up project and through positive strategic planning
- The map on page two shows the status of surface water catchments in Lewisham and images of the Ravensbourne River

**Partnership working to improve Lewisham rivers for people and wildlife**

creating a better place

**Environment Agency**

## Water Framework Directive

Frequently Asked Questions - FAQs

- 1. What is the Water Framework Directive (WFD)?**  
It is a new way of working to protect and improve the water environment through partnership working across administrative boundaries. It includes a common approach to setting environmental objectives for all surface waters, groundwater estuaries and coastal waters across the European Community. It requires Member States to draw up plans for meeting those objectives in each River Basin District (geographical areas, approximately regional in scale and based on river catchment areas)...
- 2. What is the River Basin Management Plan?**  
River Basin Management Plans are the central tool for setting out the actions required to achieve the WFD objectives in a collaborative and joined up way. They are the plans for protecting and improving the water environment and have been developed in consultation with organisations and individuals. They contain the main issues for the water environment and the actions we all need to take in order to make real progress in addressing them
- 3. Who is responsible for delivering WFD?**  
The Environment Agency as the "competent authority" is responsible for implementing the Directive. However, many other public, private and voluntary organisations have a major part to play to deliver the work set out in the plans. The Liaison Panels and the open consultation process have already engaged many of these organisations and individuals in the work that needs to be done.
- 4. Why does Lewisham council need to be aware of WFD?**  
Lewisham is a key partner in helping to improve the water environment. The actions and objectives to improve rivers in Lewisham cannot be delivered by one organisation and require close partnership working to share resources and expertise. Local authorities have "a duty" to ensure compliance with European Directives such as WFD.
- 5. What is the Water environment in Lewisham like?**  
Although there are examples of excellent river restoration across Lewisham other sections are very low environmental quality. The way rivers are assessed through WFD means the overall quality is currently assessed as "poor".
- 6. What are the priorities in the London Borough of Lewisham?**  
A key part of WFD is to ensure "no deterioration", this means new development / projects should not cause
- 7. How will WFD actions be delivered?**  
WFD encourages everyone with an interest in water to work together to protect and improve the quality of the water environment. A catchment action plan is being developed to prioritise actions and projects to improve the water environment. This is currently in draft and due to be completed by Winter 2011. This will be a "live" plan and regularly updated to
- 8. What are the incentives for reaching WFD targets?**  
Dave Webb to complete (could we mention funding for projects)
- 9. How can we work with neighbouring local authorities on WFD?**  
The Catchment Action Plan will identify cross boundary actions to improve rivers across South London and ensure rivers and water quality are improved across the catchment

# Helpful links

- ➔ **Introduction to WFD & presentation -**  
<http://www.environment-agency.gov.uk/research/planning/33362.aspx>
- ➔ **Details of the Thames RBMP -**  
<http://www.environment-agency.gov.uk/research/planning/125035.aspx>
- ➔ **What's in you backyard mapping -**  
[http://maps.environment-agency.gov.uk/wiyby/wiybyController?ep=maptopics&lang=\\_e](http://maps.environment-agency.gov.uk/wiyby/wiybyController?ep=maptopics&lang=_e)



# Delivering river restoration through the UK planning system in South London





## How we input to the planning system

- ➡ 220 planning staff in England and Wales
- ➡ Consultee in the planning process; in the preparation of plans, and their associated Sustainability Appraisals
- ➡ Consultee for individual planning applications and schemes. Last year we were consulted on over 50 000 items of casework.