

# Spatial Planning in France

**Emmanuel STEINMANN**

**Ministère de l'Ecologie, du  
Développement Durable, du  
Transport et du Logement**

**Direction de l'Eau et de la  
Biodiversité**

Ressources, territoires, habitats et logement  
Energies et climat  
Développement durable  
Prévention des risques  
Infrastructures, transports et mer

**Présent  
pour  
l'avenir**



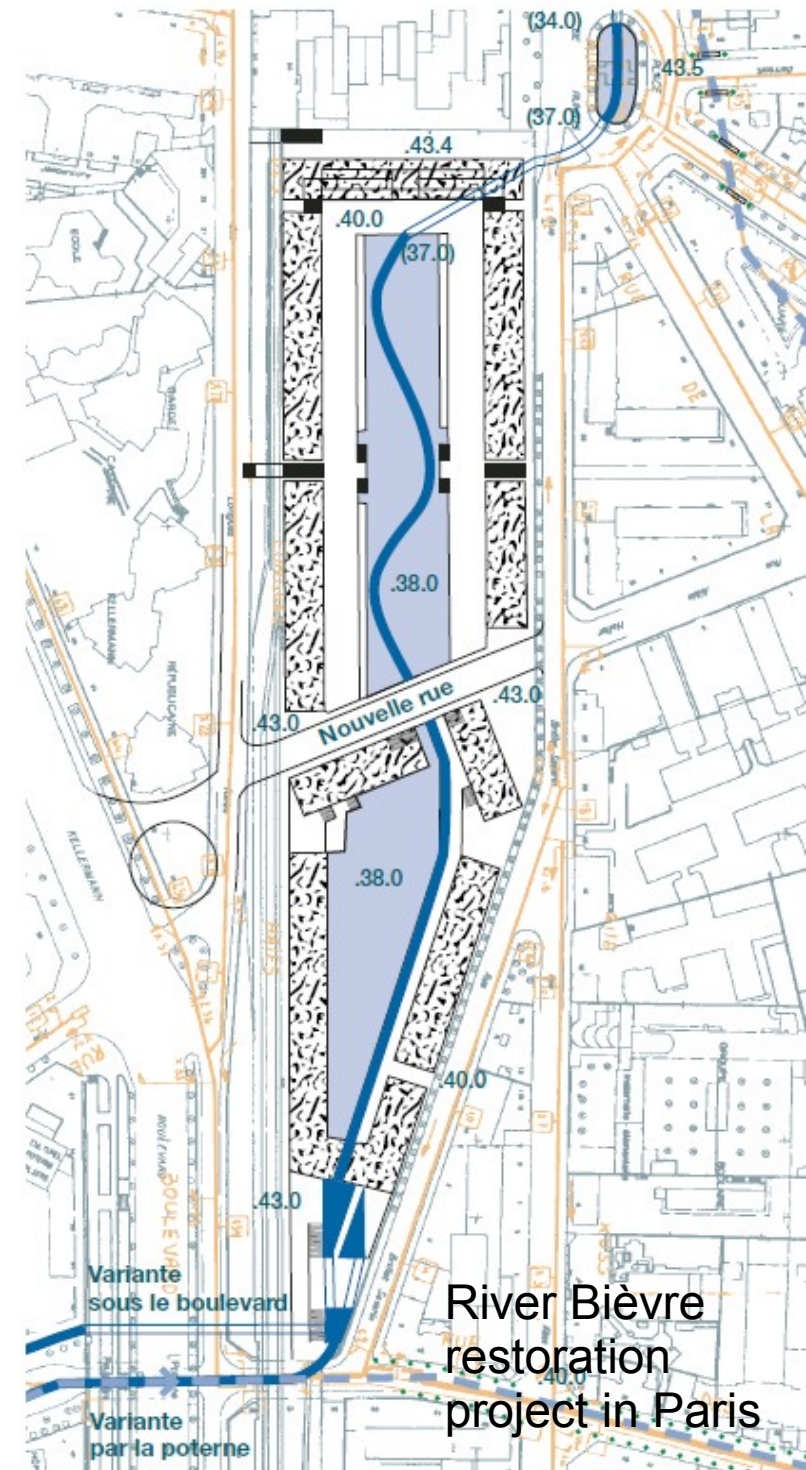
Ministère de l'Écologie, du Développement durable,  
des Transports et du Logement

[www.developpement-durable.gouv.fr](http://www.developpement-durable.gouv.fr)

# River Restoration Project

- River Restoration Plan
  - By local river authority, or municipalities
  - Spatial details on works planned / opportunities
- Ensuring Land Use
  - Negotiating with land owners
    - Private
    - Public
  - Agreement on land use change and restoration works by local authorities
  - Land purchase

In France :  
River bed is property of the owner  
of land next to the river  
(until half of the river bed)  
Expect for river listed in Public Domain



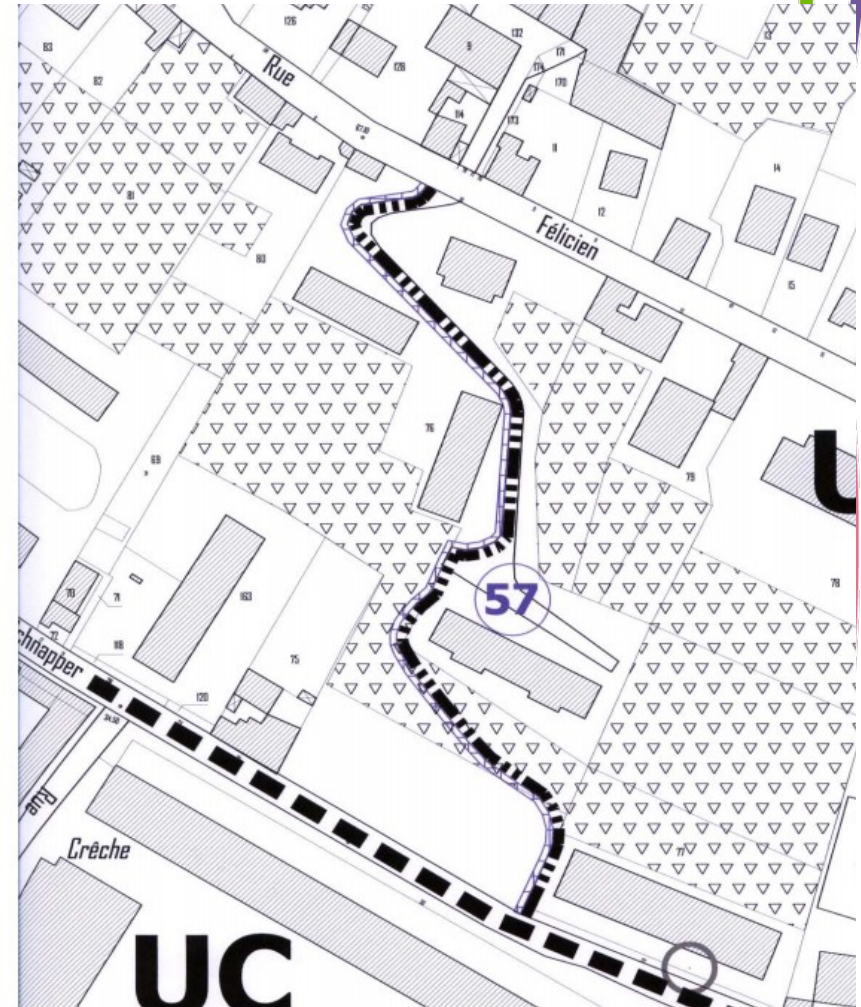
River Bièvre  
restoration  
project in Paris



# Urban Planning

## Plan Local d'Urbanisme PLU : Local Urban Planning tool at municipality level

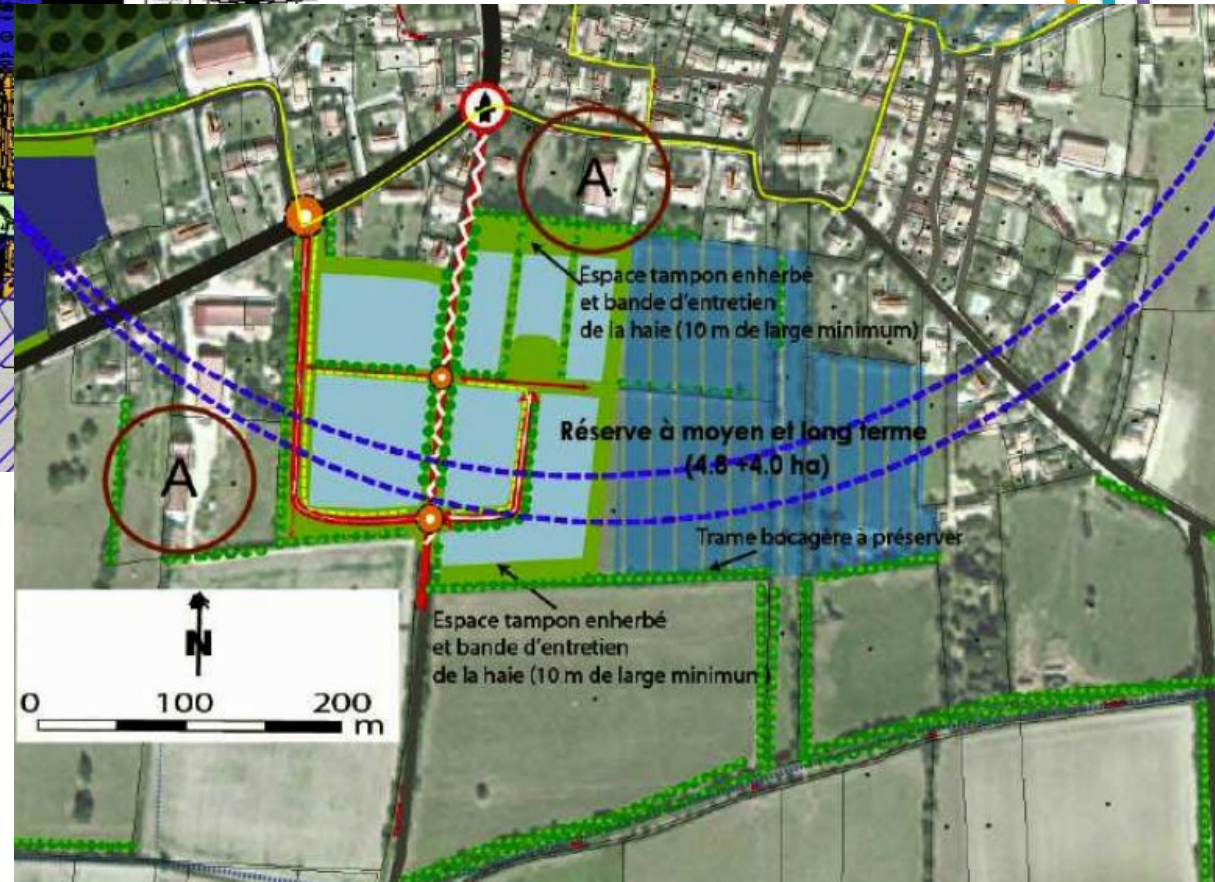
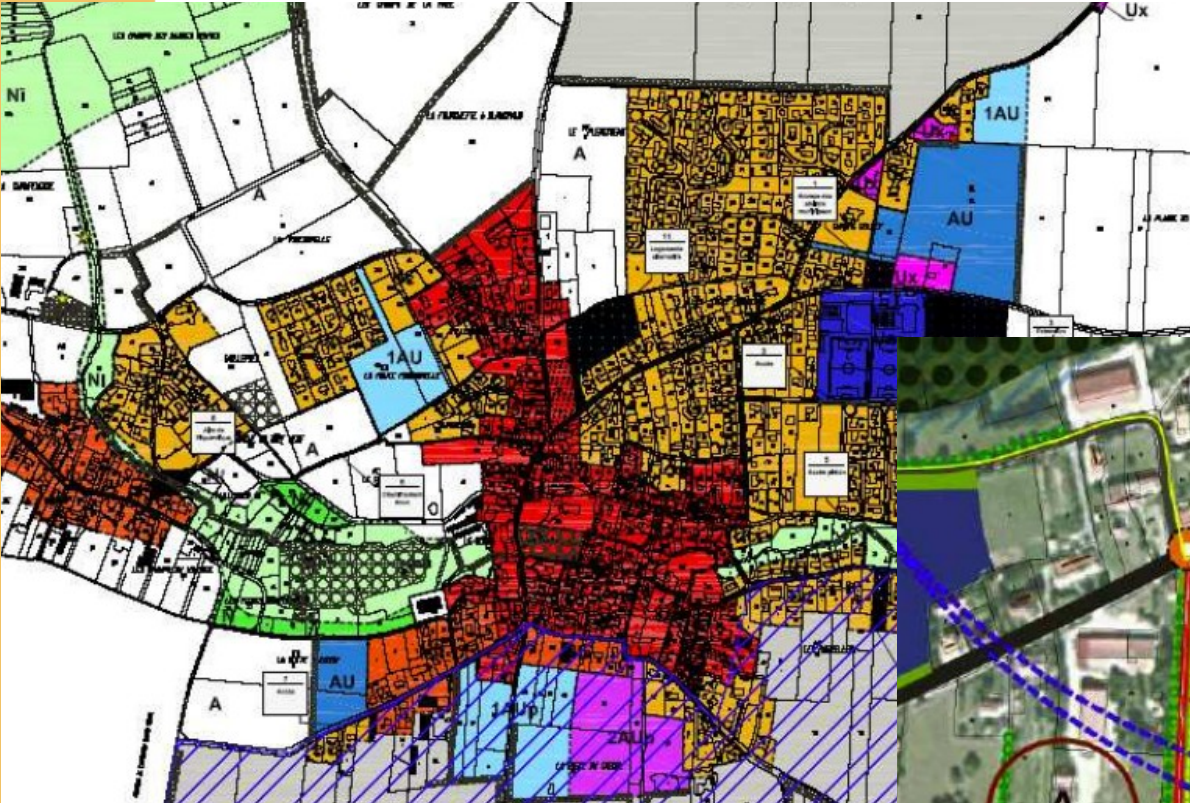
- Defines land use in municipality (urbanized, to be urbanized, agricultural use, natural, etc) and associated regulations
- Can identify areas for specific projects of public interest (« espaces réservés »)
- Can identify « preemption areas » (municipality gets priority on land purchase)





# Urban Planning

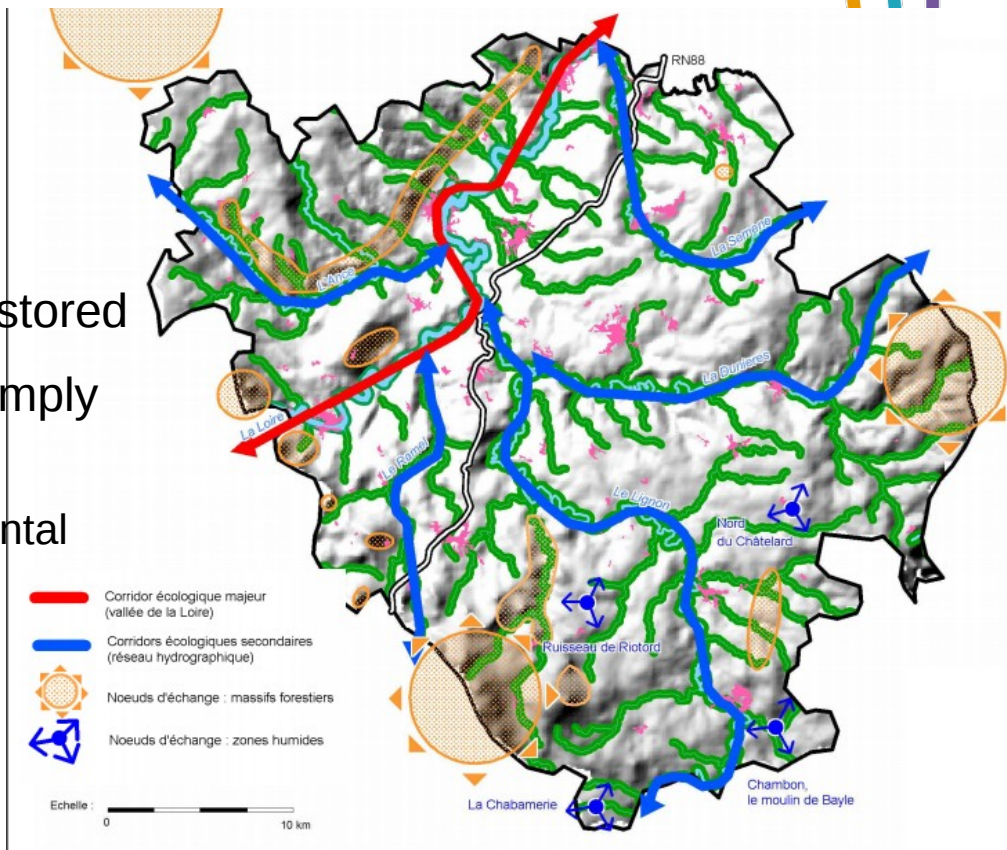
Land use areas





# Spatial Planning at Territorial Scale

- Schéma de Cohérence Territoriale (ScoT) –
  - land development plan at the scale of a group of municipalities
  - Planning of housing, transportation, environmental aspects
  - Can specify major environmental infrastructures to be preserved or restored
  - Local Urban Plans (PLU) have to comply with ScoT
    - Local Land development environmental infrastructures planned in ScoT are feasible (legal link of compatibility)



# River Basin Management Plan - RBMP

- WFD RBMPs
  - Land Use Plan (PLU & SCoT) must take into account RBMP's Environmental targets and specific goals
  - WFD RBMPs mostly at too large a scale to consider specific river restoration projects
- Local RBMPs (Schéma d'Aménagement et de Gestion des Eaux – SAGE)
  - Land Use Plan (PLU & SCoT) must take into account RBMP's Environmental targets and specific goals
  - Local RBMP can identify flooding areas to be preserved or river restoration projects as environmental goals to achieve

# Planning River Restoration

