

**'Improving morphology and fish passage in high energy rivers'**

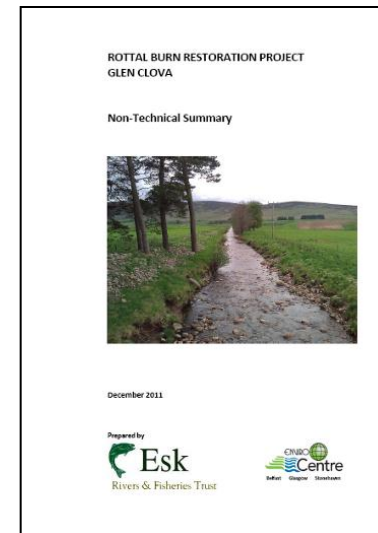
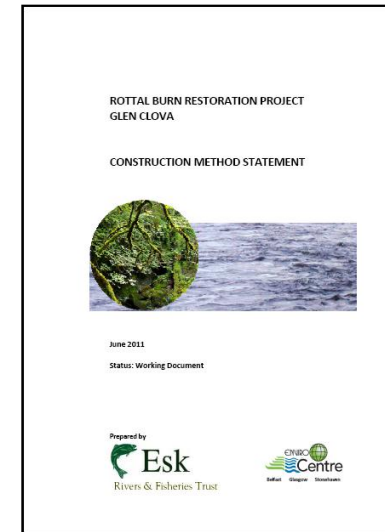
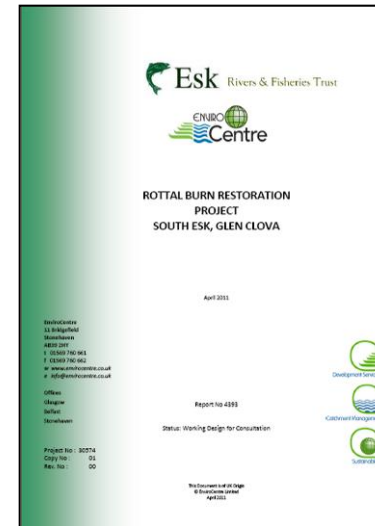
# **Rottal Burn Restoration Glen Clova**

**Dr Kenneth MacDougall**

**Projects Director, EnviroCentre Ltd.**

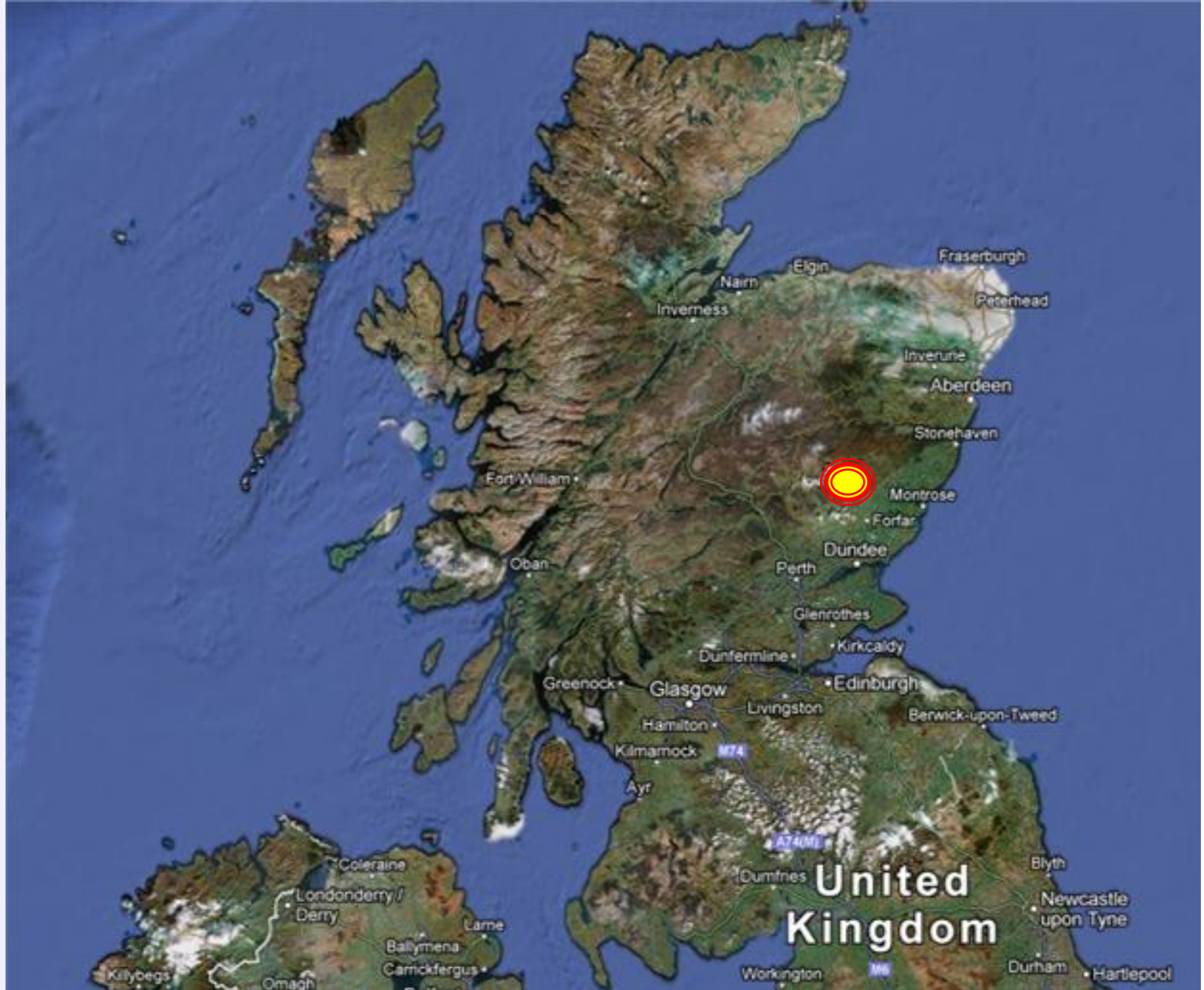
**[kmacdougall@envirocentre.co.uk](mailto:kmacdougall@envirocentre.co.uk)**

# Rottal Burn Restoration

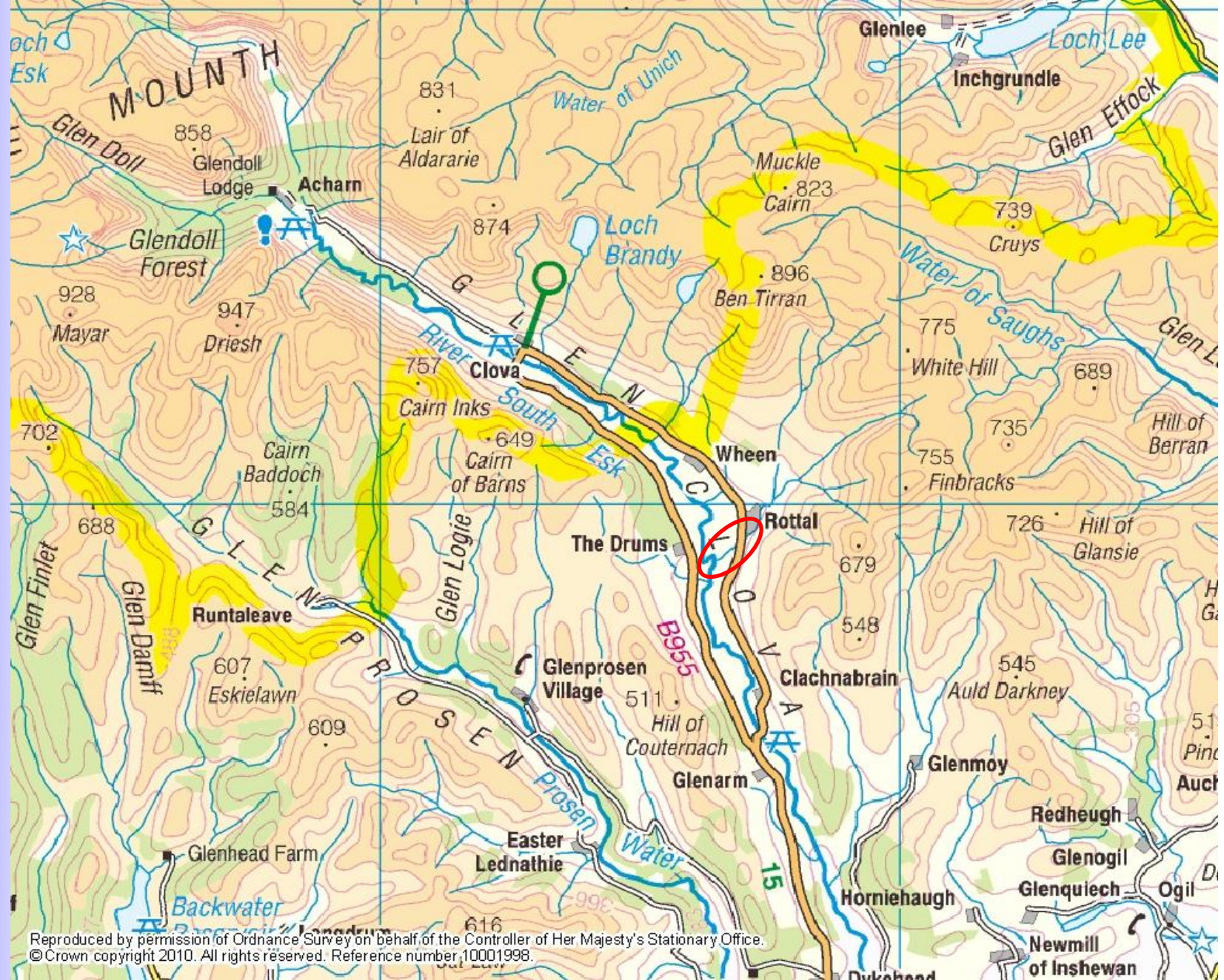


# Summary

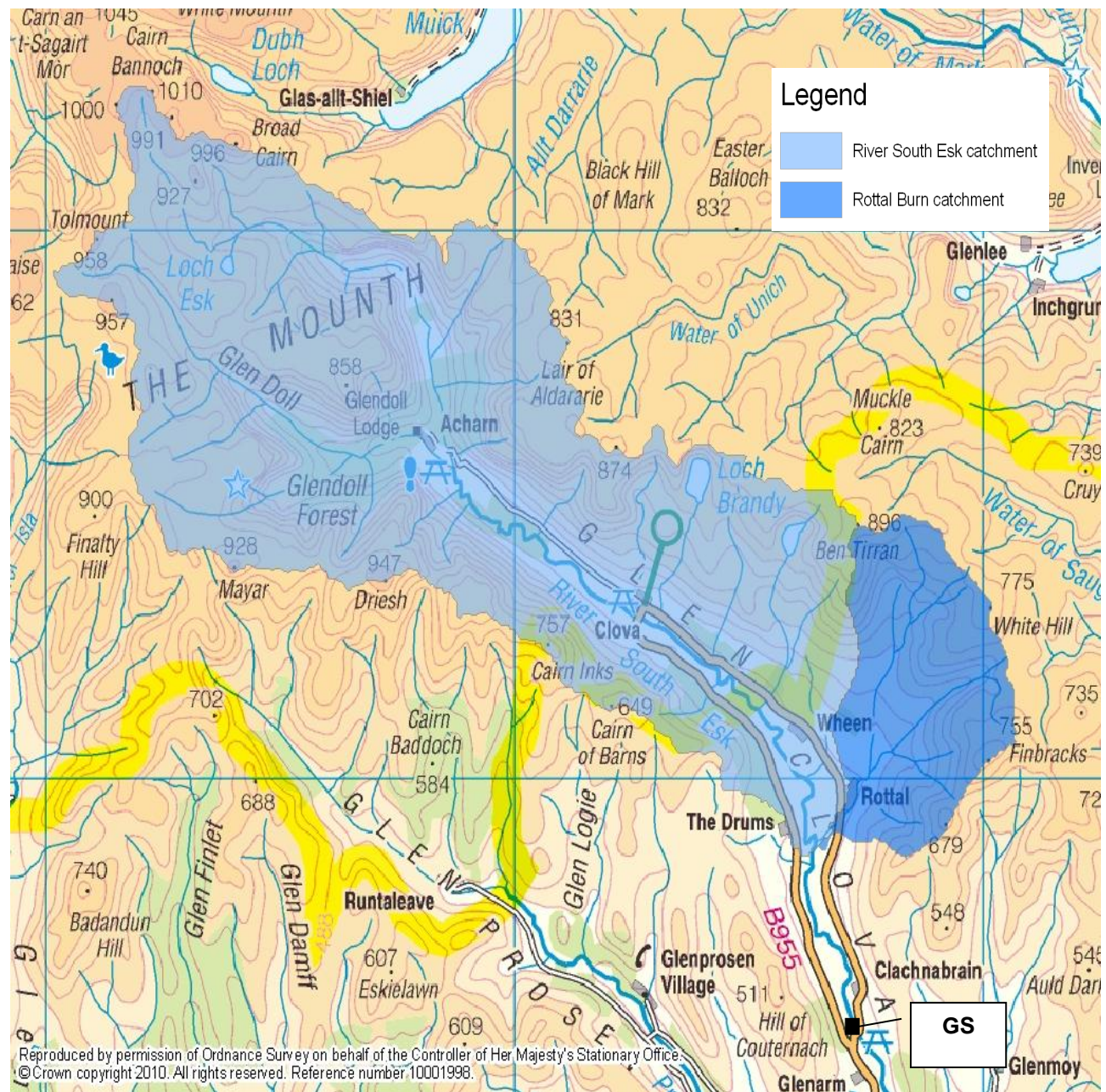
- 650m straightened channel
- 1,100m new channel created
- Connection to wetland areas
- Formation of backwater
- Large rootballs used in banks
- 2,000 trees planted
- Monitoring network installed



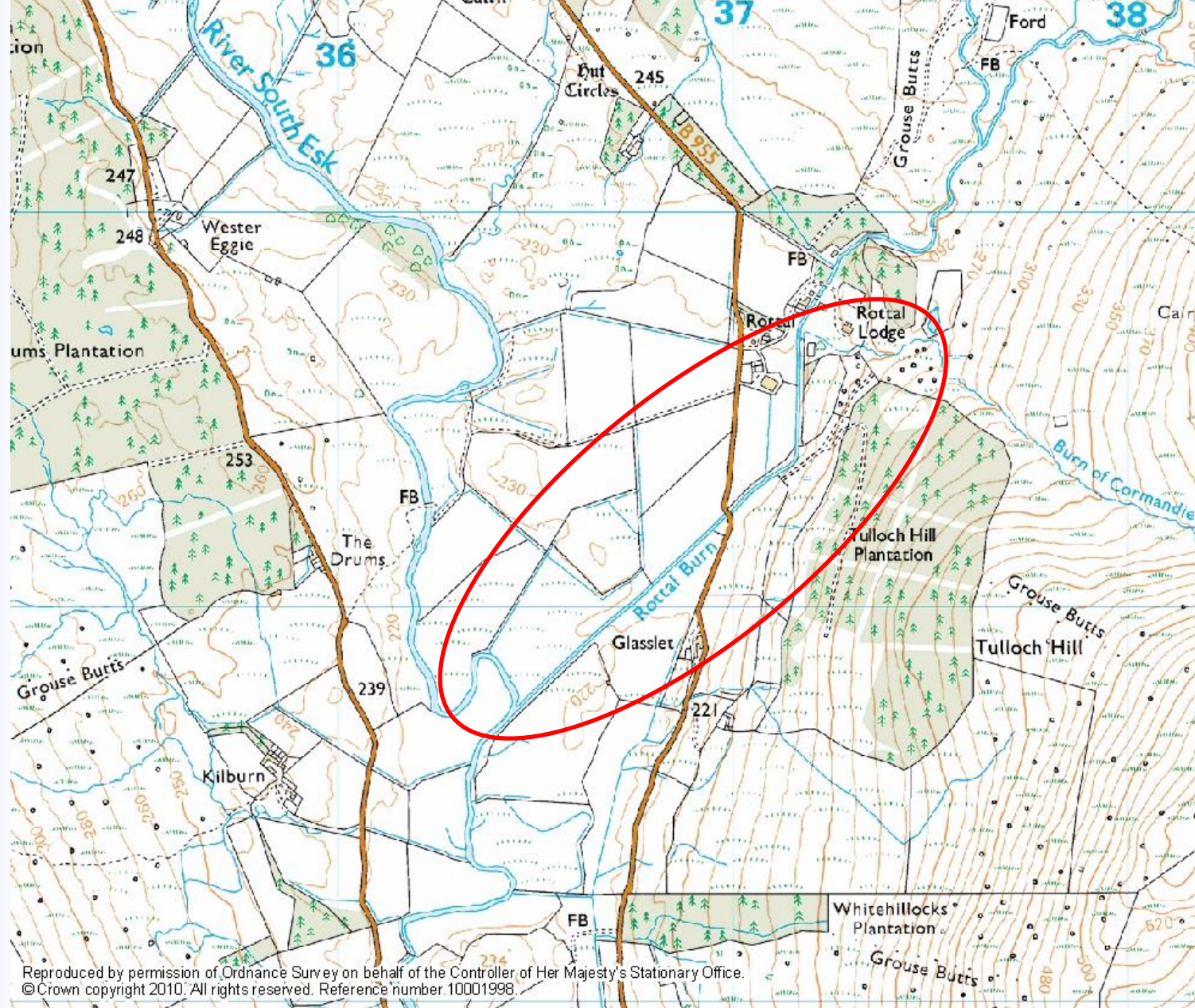












Esk Rivers & Fisheries Trust





# Glen Clova





# Rottal Burn









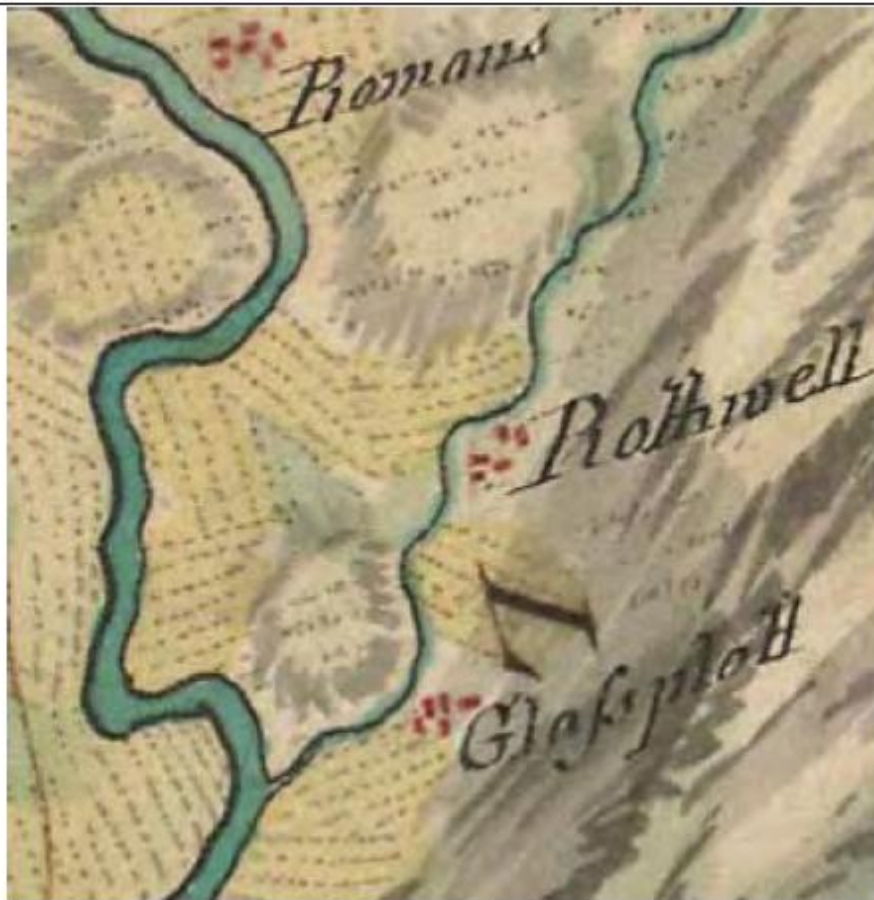






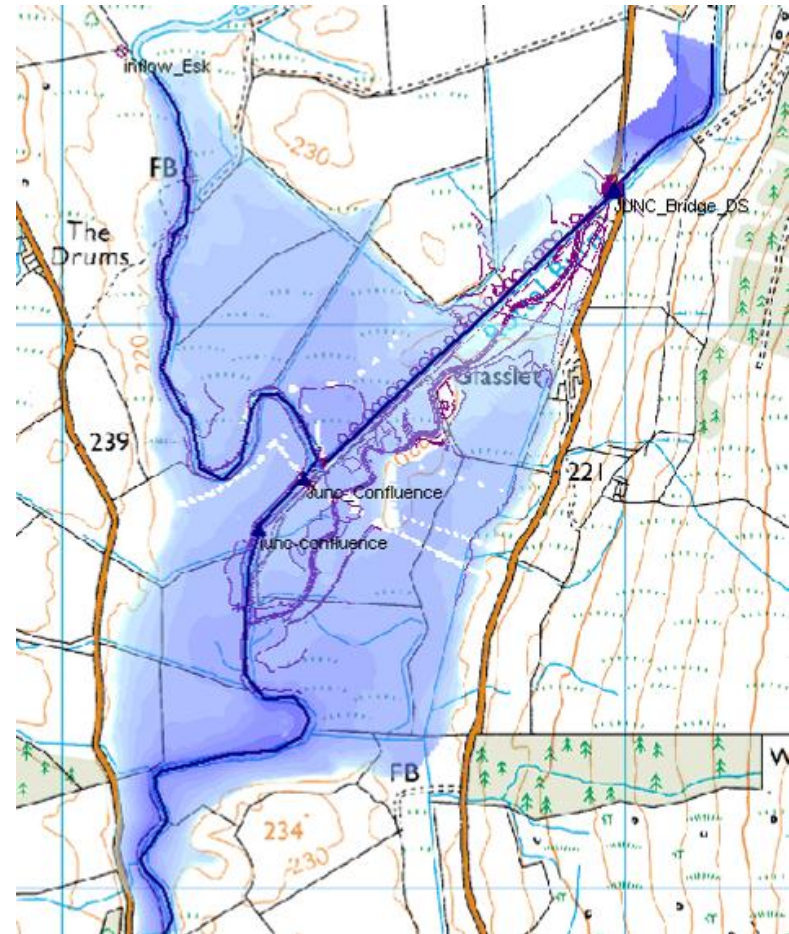
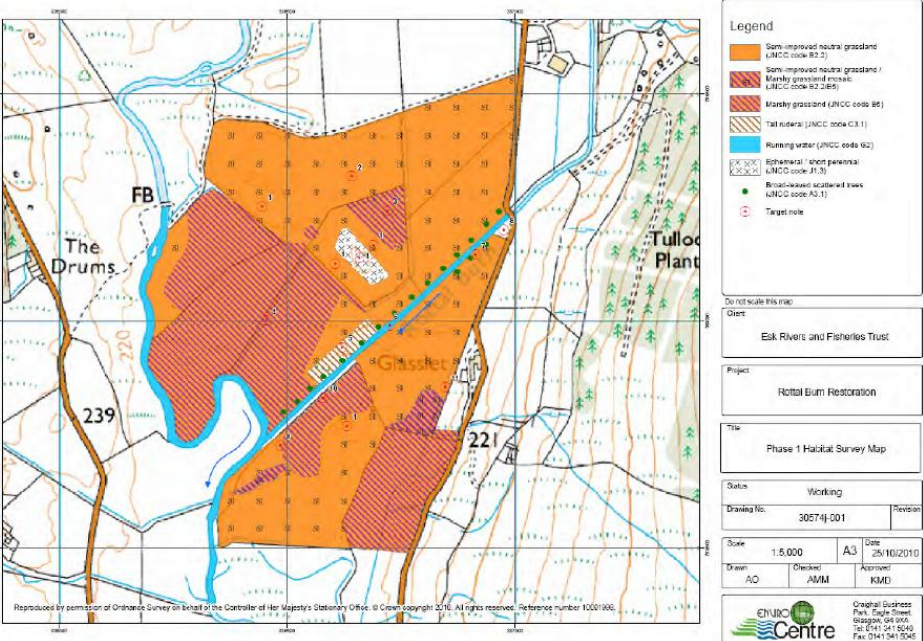


# Historic Review



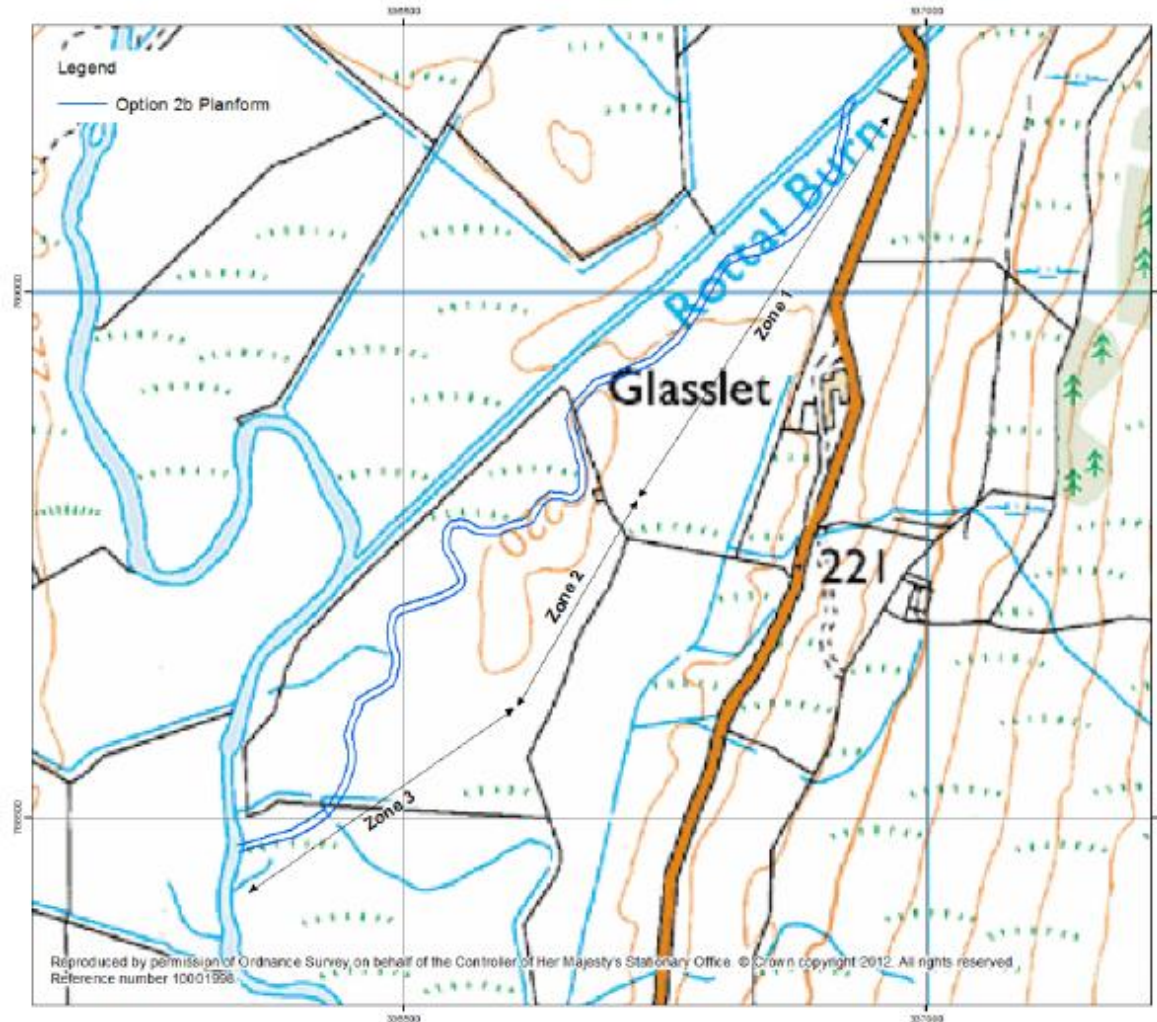
Roy Military Survey of Scotland 1747-55, National Library of Scotland (NLS) Ordnance Survey 1<sup>st</sup> Edition 25":1 Mile Map, 1860-80, NLS

RESS | Centre for River EcoSystem Science





# Design Alignment



**Phased construction in May/June & August 2012**















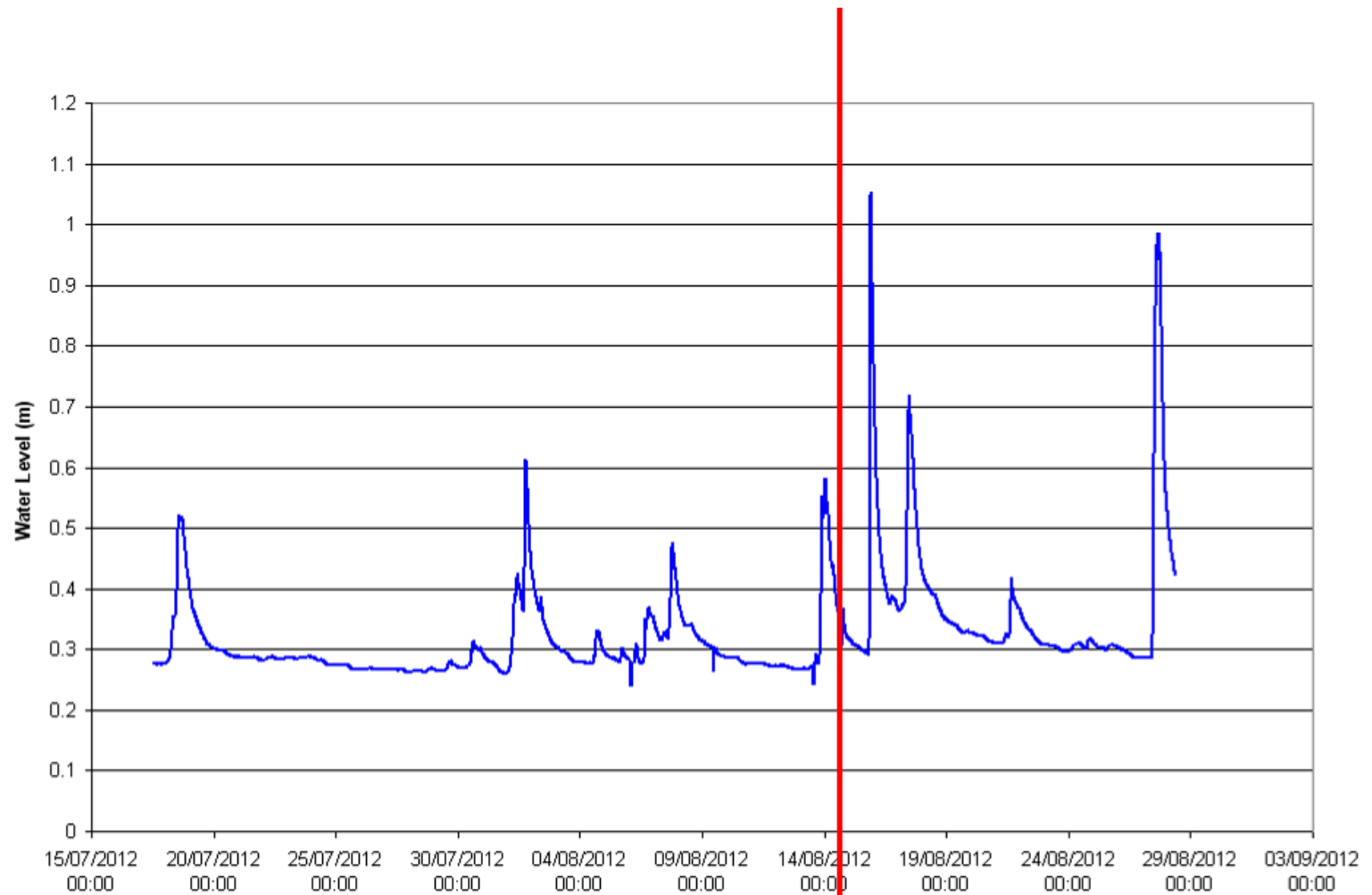








# Water Levels





























# Summary

- 650m straightened channel
- 1,100m new channel created
- Connection to wetland areas
- Formation of backwater
- Large rootballs used in banks
- 2,000 trees planted
- Monitoring network installed



# Thank You

